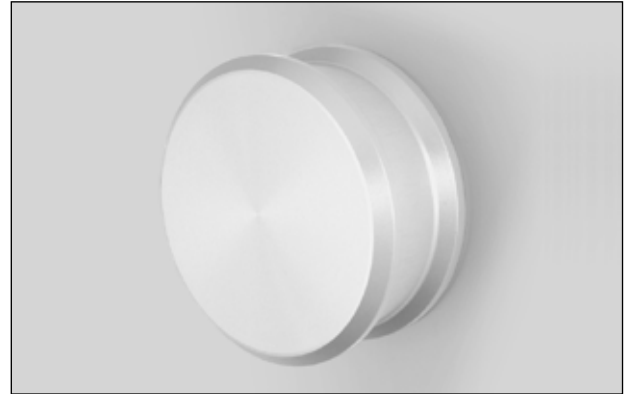


Installation instruction RS4 Design 30

Required tools:

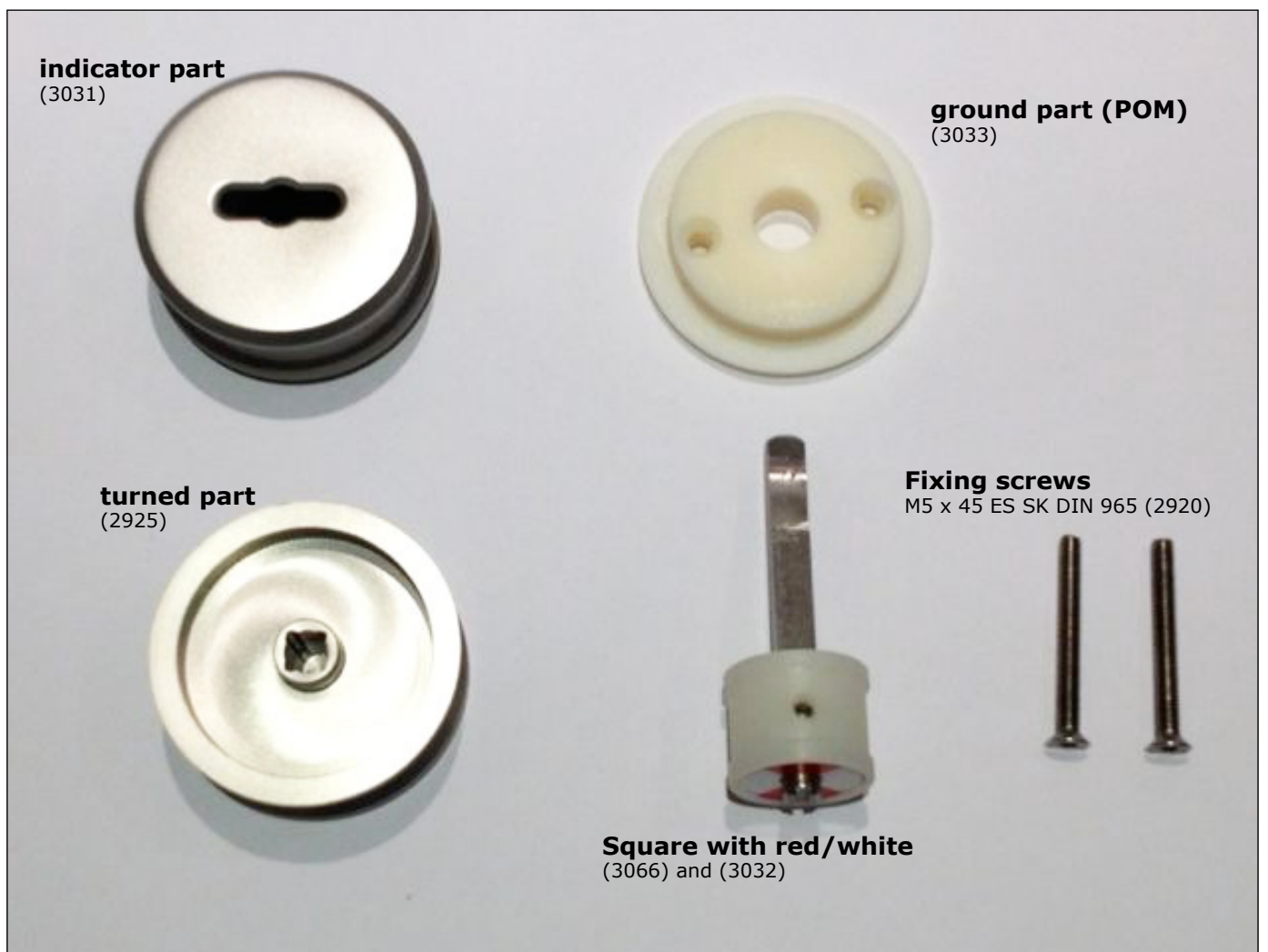
Allen key 2,5

Torx screwdriver 20



RS4 Series 30 can be used for inner and exterior doors.

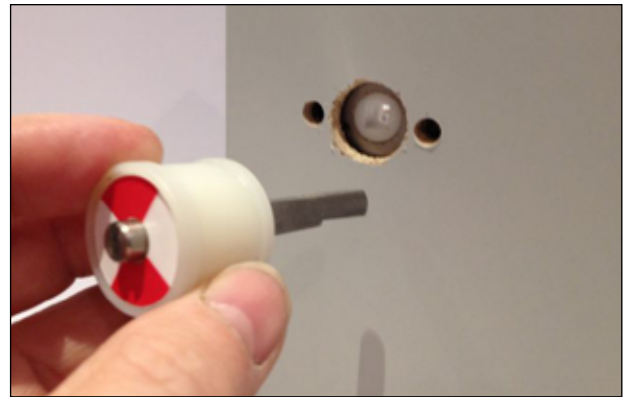
RS4 components



Insert the square with red/white indication at the outside of the door.

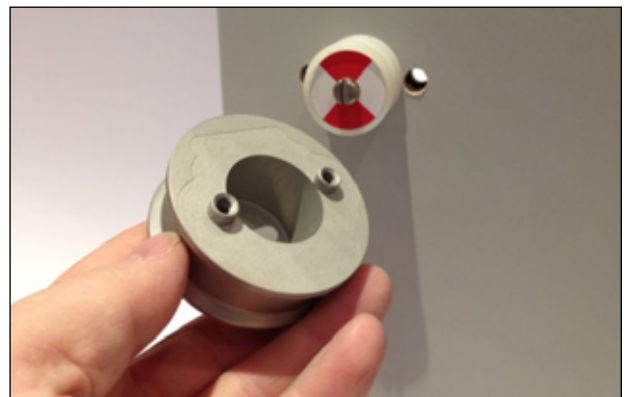
Care has to be taken on the right position:
White has to be left and right.

The recess in the square has to point downwards.

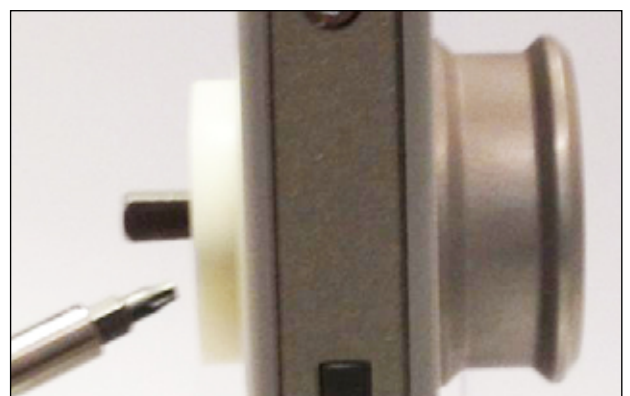
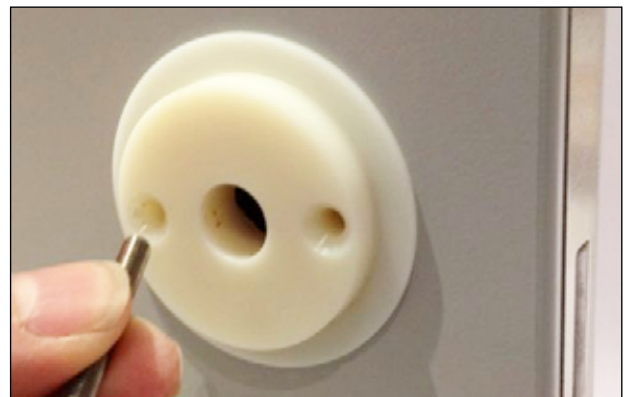


Now put the indicator part on the red/white indication.

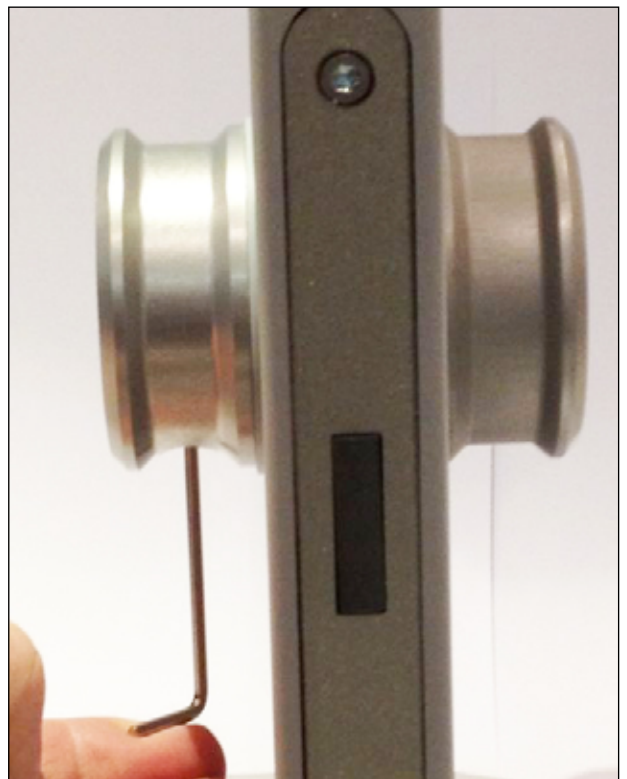
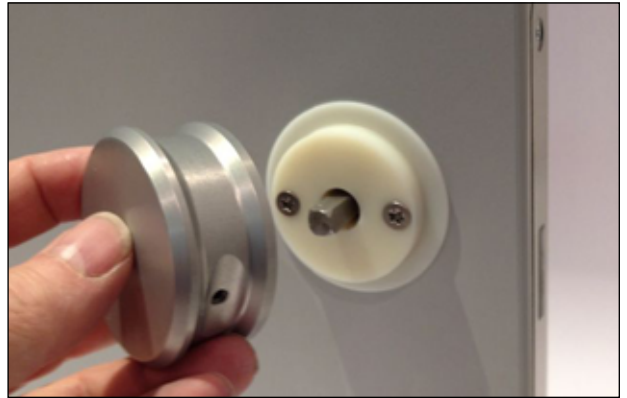
Attention! Not fixed.



Insert the groundpart (POM) from the other side and fix it through the lock housing with the indicator part with 2 screws M5 x 45 (Torx 20) .



Fit the turned part on the ground part (POM).
Hole for the setscrew has to point downwards.
Now fix it with 2,5 mm allen key.



Parts list

Quantity	Article	Colour/Material	Article-No.
1	Indicator part (EHV30)	anodized/aluminium	3031
1	Turned part (EHV30)	anodized/aluminium	2925
1	Square 8 x 80 ES	stainless steel	3032
1	Red/white POM (EHV30)	POM plastic	3066
1	Ground part POM (EHV30)	POM plastic	3033
1	Screw 3,9 x 22 (DIN 7982)	stainless steel	3146
2	Screw M5 x 45 (DIN 965)	stainless steel	2920